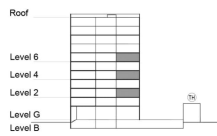


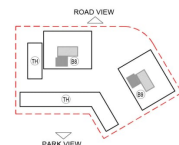
**TYPE 1 - STANDARD BUILDING
ONE BEDROOM APARTMENT
Variation 5A**

Net Area = 58.68 Sq.m (631.40 Sq.ft)
Balcony Area = 9.69 Sq.m (104.26 Sq.ft)
Total Area = 68.37 Sq.m (735.66 Sq.ft)

OCCURS IN TYPICAL FLOOR PLAN AV2



KEY SECTION - B8 & B9



KEY PLAN

