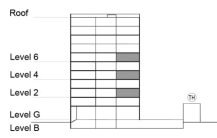


**TYPE 1 - STANDARD BUILDING  
ONE BEDROOM APARTMENT  
Variation 4B**

Net Area = 60.03 Sq.m (645.92 Sq.ft)  
Balcony Area = 9.48 Sq.m (102.00 Sq.ft)  
Total Area = 69.51 Sq.m (747.93 Sq.ft)

OCCURS IN TYPICAL FLOOR PLAN AV2



KEY SECTION - B8 & B9



KEY PLAN

