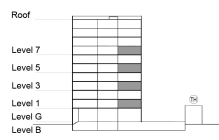


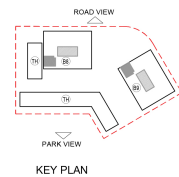
**TYPE 1 - STANDARD BUILDING
ONE BEDROOM APARTMENT
Variation 4A**

Net Area = 60.04 Sq.m (646.03 Sq.ft)
Balcony Area = 7.52 Sq.m (80.92 Sq.ft)
Total Area = 67.56 Sq.m (726.95 Sq.ft)

OCCURS IN TYPICAL FLOOR PLAN AV1



KEY SECTION - B8 & B9



KEY PLAN

