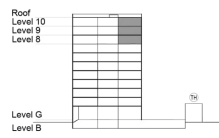


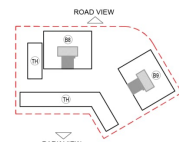
**TYPE 1 - STANDARD BUILDING  
ONE BEDROOM APARTMENT  
Variation 3**

Net Area = 60.00 Sq.m (645.60 Sq.ft)  
Balcony Area = 8.66 Sq.m (93.18 Sq.ft)  
Total Area = 68.66 Sq.m (738.78 Sq.ft)

OCCURS IN TYPICAL FLOOR PLAN BV1



KEY SECTION - B8 & B9



KEY PLAN

