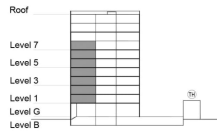


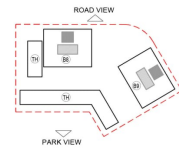
**TYPE 1 - STANDARD BUILDING  
ONE BEDROOM APARTMENT  
Variation 2A**

Net Area = 59.59 Sq.m (641.19 Sq.ft)  
Balcony Area = 8.55 Sq.m (92.00 Sq.ft)  
Total Area = 68.14 Sq.m (733.19 Sq.ft)

OCCURS IN TYPICAL FLOOR PLAN AV1 & AV2



KEY SECTION - B8 & B9



KEY PLAN

