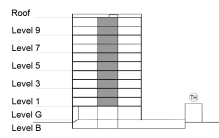


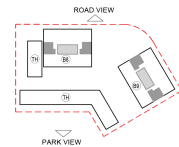
**TYPE 1 - STANDARD BUILDING  
ONE BEDROOM APARTMENT  
Variation 1A**

Net Area = 60.27 Sq.m (648.51 Sq.ft)  
Balcony Area = 0.00 Sq.m (0.00 Sq.ft)  
Total Area = 60.27 Sq.m (648.51 Sq.ft)

OCCURS IN TYPICAL FLOOR PLAN AV1, AV2 & BV1



KEY SECTION - B8 & B9



KEY PLAN

