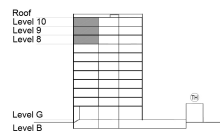


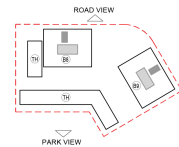
**TYPE 1 - STANDARD BUILDING
STUDIO APARTMENT
Variation 2**

Net Area = 29.27 Sq.m (314.95 Sq.ft)
Balcony Area = 7.54 Sq.m (81.13 Sq.ft)
Total Area = 36.81 Sq.m (396.08 Sq.ft)

OCCURS IN TYPICAL FLOOR PLAN BV1



KEY SECTION - B8 & B9



KEY PLAN

