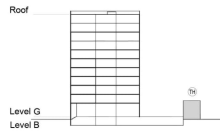
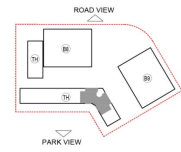


**TOWNHOUSE**  
**THREE BEDROOM APARTMENT**  
 Corner Unit Townhouse

Net Area = 186.73 Sq.m (2009.21 Sq.ft)  
 Balcony Area = 53.76 Sq.m (578.46 Sq.ft)  
 Total Area = 240.49 Sq.m (2587.67 Sq.ft)



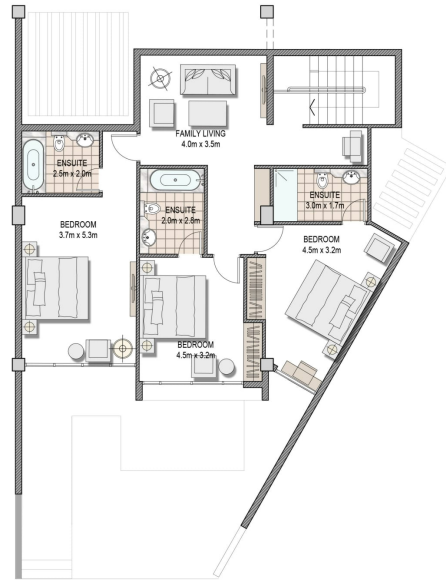
KEY SECTION - TH



KEY PLAN



GROUND FLOOR PLAN



FIRST FLOOR PLAN