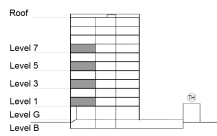


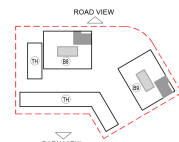
**TYPE 1 - STANDARD BUILDING
TWO BEDROOM APARTMENT
Variation 6**

Net Area = 99.27 Sq.m (1068.15 Sq.ft)
Balcony Area = 13.63 Sq.m (146.66 Sq.ft)
Total Area = 112.90 Sq.m (1214.80 Sq.ft)

OCCURS IN TYPICAL FLOOR PLAN AV1



KEY SECTION - B8 & B9



KEY PLAN

