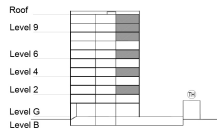


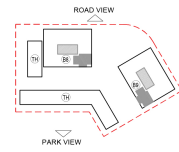
TYPE 1 - STANDARD BUILDING
TWO BEDROOM APARTMENT
Variation 3

Net Area = 93.76 Sq.m (1008.86 Sq.ft)
 Balcony Area = 6.31 Sq.m (67.90 Sq.ft)
 Total Area = 100.07 Sq.m (1076.75 Sq.ft)

OCCURS IN TYPICAL FLOOR PLAN AV2 & BV1



KEY SECTION - B8 & B9



KEY PLAN

