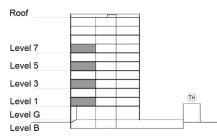


**TYPE 1 - STANDARD BUILDING  
TWO BEDROOM APARTMENT  
Variation 2**

Net Area = 100.81 Sq.m (1084.72 Sq.ft)  
Balcony Area = 13.63 Sq.m (146.66 Sq.ft)  
Total Area = 114.44 Sq.m (1231.37 Sq.ft)

OCCURS IN TYPICAL FLOOR PLAN AV1



KEY SECTION - B8 & B9



KEY PLAN

