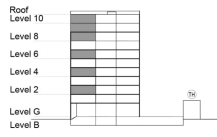


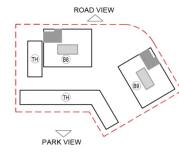
**TYPE 1 - STANDARD BUILDING  
TWO BEDROOM APARTMENT  
Variation 1**

Net Area = 100.53 Sq.m (1081.70 Sq.ft)  
 Balcony Area = 6.82 Sq.m (73.36 Sq.ft)  
 Total Area = 107.35 Sq.m (1155.09 Sq.ft)

OCCURS IN TYPICAL FLOOR PLAN AV2 & BV1



KEY SECTION - B8 & B9



KEY PLAN

