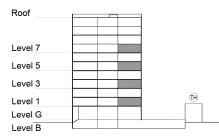


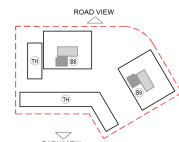
**TYPE 1 - STANDARD BUILDING
ONE BEDROOM APARTMENT
Variation 5B**

Net Area = 58.67 Sq.m (631.29 Sq.ft)
Balcony Area = 7.43 Sq.m (79.95 Sq.ft)
Total Area = 66.10 Sq.m (711.24 Sq.ft)

OCCURS IN TYPICAL FLOOR PLAN AV1



KEY SECTION - B8 & B9



KEY PLAN

