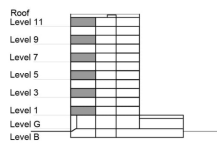


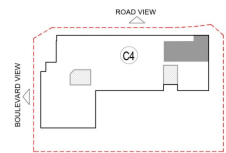
**TYPE 2 - GATEWAY BUILDING
THREE BEDROOM APARTMENT
Variation 1**

Net Area = 137.56 Sq.m (1480.15 Sq.ft)
Balcony Area = 8.10 Sq.m (87.16 Sq.ft)
Total Area = 145.66 Sq.m (1567.30 Sq.ft)

OCCURS IN TYPICAL FLOOR PLAN AV1



KEY SECTION - C3 & C4



KEY PLAN - C4

