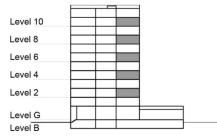


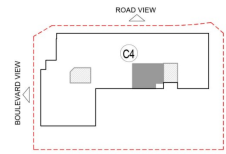
TYPE 2 - GATEWAY BUILDING
TWO BEDROOM APARTMENT
 Middle Unit Variation 2B

Net Area = 109.99 Sq.m (1183.50 Sq.ft)
 Balcony Area = 7.01 Sq.m (75.42 Sq.ft)
 Total Area = 117.00 Sq.m (1258.92 Sq.ft)

OCCURS IN TYPICAL FLOOR PLAN AV2



KEY SECTION - C3 & C4



KEY PLAN - C4

