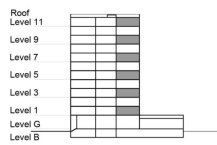


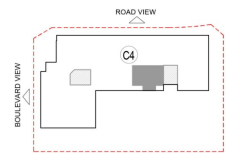
**TYPE 2 - GATEWAY BUILDING**  
**TWO BEDROOM APARTMENT**  
 Middle Unit Variation 1B

Net Area = 102.12 Sq.m (1098.80 Sq.ft)  
 Balcony Area = 7.61 Sq.m (81.88 Sq.ft)  
 Total Area = 109.73 Sq.m (1180.70 Sq.ft)

OCCURS IN TYPICAL FLOOR PLAN AV1



KEY SECTION - C3 & C4



KEY PLAN - C4

