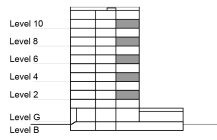


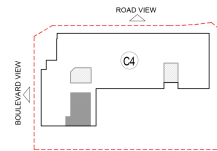
**TYPE 2 - GATEWAY BUILDING
TWO BEDROOM APARTMENT
End Unit Variation 3B New**

Net Area = 102.28 Sq.m (1100.53 Sq.ft)
Balcony Area = 9.67 Sq.m (104.05 Sq.ft)
Total Area = 111.95 Sq.m (1204.58 Sq.ft)

OCCURS IN TYPICAL FLOOR PLAN AV2



KEY SECTION - C4



KEY PLAN

