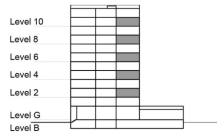


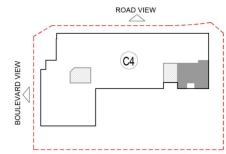
**TYPE 2 - GATEWAY BUILDING  
TWO BEDROOM APARTMENT  
End Unit Variation 2B**

Net Area = 113.69 Sq.m (1223.30 Sq.ft)  
Balcony Area = 6.71 Sq.m (72.20 Sq.ft)  
Total Area = 120.40 Sq.m (1295.50 Sq.ft)

OCCURS IN TYPICAL FLOOR PLAN AV2



KEY SECTION - C3 & C4



KEY PLAN - C4

