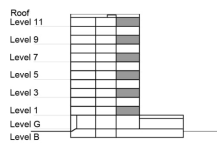


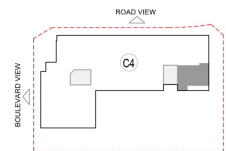
**TYPE 2 - GATEWAY BUILDING
TWO BEDROOM APARTMENT
End Unit Variation 1B**

Net Area = 105.51 Sq.m (1135.29 Sq.ft)
Balcony Area = 9.70 Sq.m (104.37 Sq.ft)
Total Area = 115.21 Sq.m (1239.66 Sq.ft)

OCCURS IN TYPICAL FLOOR PLAN AV1



KEY SECTION - C3 & C4



KEY PLAN - C4

