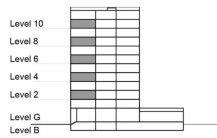


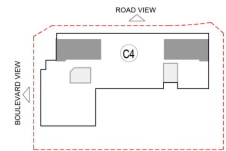
**TYPE 2 - GATEWAY BUILDING
THREE BEDROOM APARTMENT
Variation 2**

Net Area = 129.65 Sq.m (1395.03 Sq.ft)
Balcony Area = 9.70 Sq.m (104.37 Sq.ft)
Total Area = 139.35 Sq.m (1499.41 Sq.ft)

OCCURS IN TYPICAL FLOOR PLAN AV2



KEY SECTION - C3 & C4



KEY PLAN - C4

