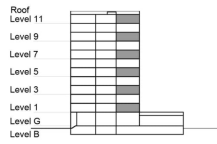


TYPE 2 - GATEWAY BUILDING
TWO BEDROOM APARTMENT
 Middle Unit Variation 1B

Net Area = 101.54 Sq.m (1092.58 Sq.ft)
 Balcony Area = 7.62 Sq.m (82.02 Sq.ft)
 Total Area = 109.16 Sq.m (1174.60 Sq.ft)

OCCURS IN TYPICAL FLOOR PLAN AV1



KEY SECTION - C3 & C4



KEY PLAN - C3

