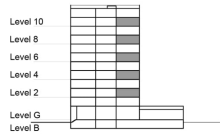


**TYPE 2 - GATEWAY BUILDING  
TWO BEDROOM APARTMENT  
End Unit Variation 2B**

Net Area = 113.51 Sq.m (1221.38 Sq.ft)  
Balcony Area = 6.71 Sq.m (72.17 Sq.ft)  
Total Area = 120.22 Sq.m (1293.55 Sq.ft)

OCCURS IN TYPICAL FLOOR PLAN AV2



KEY SECTION - C3 & C4



KEY PLAN - C3

