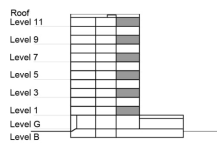


**TYPE 2 - GATEWAY BUILDING  
TWO BEDROOM APARTMENT  
End Unit Variation 1B**

Net Area = 106.07 Sq.m (1135.29 Sq.ft)  
Balcony Area = 9.70 Sq.m (1141.31 Sq.ft)  
Total Area = 115.77 Sq.m (1245.69 Sq.ft)

OCCURS IN TYPICAL FLOOR PLAN AV1



KEY SECTION - C3 & C4



KEY PLAN - C3

