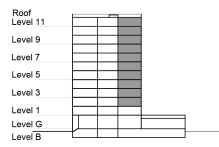


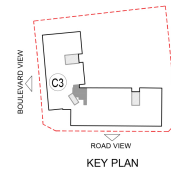
**TYPE 2 - GATEWAY BUILDING  
ONE BEDROOM APARTMENT  
Variation 7**

Net Area = 56.28 Sq.m (605.57 Sq.ft)  
Balcony Area = 0.00 Sq.m (0.00 Sq.ft)  
Total Area = 56.28 Sq.m (605.57 Sq.ft)

OCCURS IN TYPICAL FLOOR PLAN AV1 & AV2



KEY SECTION - C3



KEY PLAN

