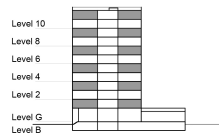


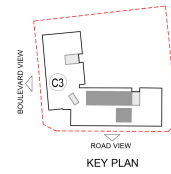
**TYPE 2 - GATEWAY BUILDING
ONE BEDROOM APARTMENT
Variation 2**

Net Area = 63.99 Sq.m (688.54 Sq.ft)
Balcony Area = 9.85 Sq.m (105.96 Sq.ft)
Total Area = 73.84 Sq.m (794.52 Sq.ft)

OCCURS IN TYPICAL FLOOR PLAN AV2



KEY SECTION - C3



KEY PLAN

