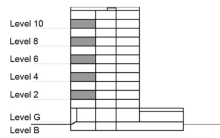


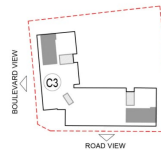
**TYPE 2 - GATEWAY BUILDING  
THREE BEDROOM APARTMENT  
Variation 2**

Net Area = 130.26 Sq.m (1401.60 Sq.ft)  
Balcony Area = 9.70 Sq.m (104.37 Sq.ft)  
Total Area = 139.97 Sq.m (1506.10 Sq.ft)

OCCURS IN TYPICAL FLOOR PLAN AV2



KEY SECTION - C3 & C4



KEY PLAN - C3

