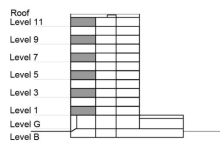


TYPE 2 - GATEWAY BUILDING
THREE BEDROOM APARTMENT
Variation 1

Net Area = 137.97 Sq.m (1484.56 Sq.ft)
 Balcony Area = 8.10 Sq.m (87.17 Sq.ft)
 Total Area = 145.07 Sq.m (1560.95 Sq.ft)

OCCURS IN TYPICAL FLOOR PLAN AV1



KEY SECTION - C3 & C4



KEY PLAN - C3

