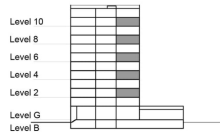


TYPE 2 - GATEWAY BUILDING
TWO BEDROOM APARTMENT
Middle Unit Variation 2B

Net Area = 109.80 Sq.m (1181.47 Sq.ft)
 Balcony Area = 7.03 Sq.m (75.61 Sq.ft)
 Total Area = 116.83 Sq.m (1257.08 Sq.ft)

OCCURS IN TYPICAL FLOOR PLAN AV2



KEY SECTION - C3 & C4



KEY PLAN - C3

