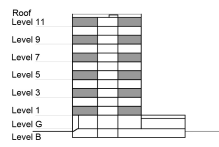


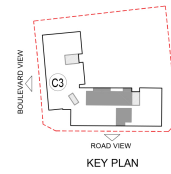
**TYPE 2 - GATEWAY BUILDING
ONE BEDROOM APARTMENT
Variation 1**

Net Area = 73.81 Sq.m (794.20 Sq.ft)
Balcony Area = 7.28 Sq.m (78.34 Sq.ft)
Total Area = 81.09 Sq.m (872.54 Sq.ft)

OCCURS IN TYPICAL FLOOR PLAN AV1



KEY SECTION - C3



KEY PLAN

